

How to install / update TeamViewer and YouTube modules

First, you must be sure there is firmware version 3.5 in the device (if not, use **Internet update** from system menu).

1. The applications

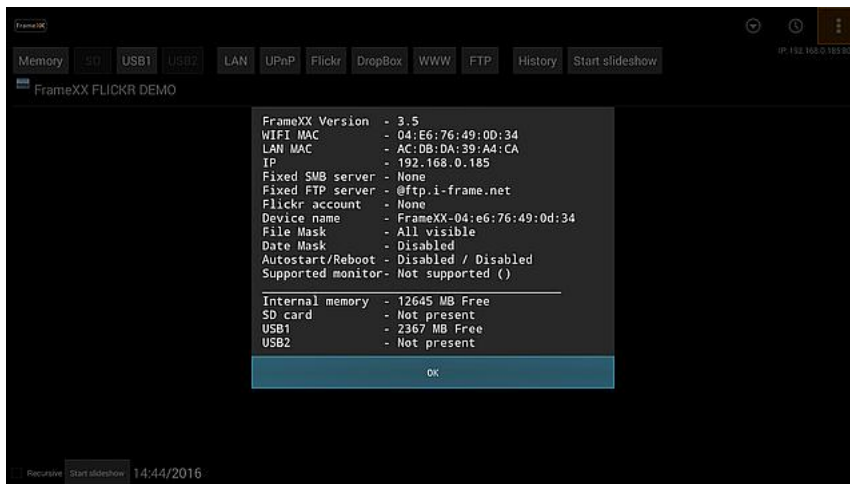
framexx-tvw.apk

and

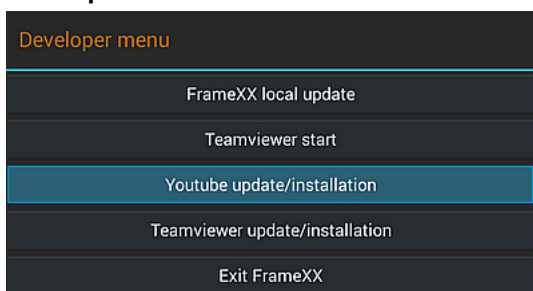
framexx-youtube.apk

must be located in main folder (root) of inserted USB or SD flash memory

2. Select **Status** (system menu in the upper right corner



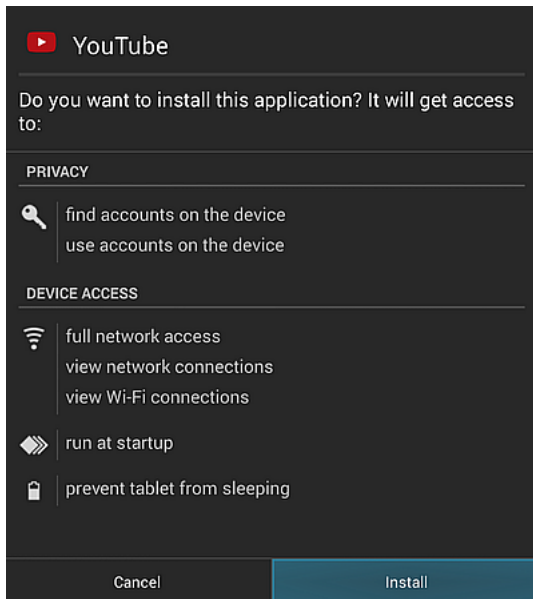
Press on the remote control (consequently) **Arrow_left** and **Arrow_right** keys, then you will see **Developer menu**



Note: You will not see menu item Youtube update/installation in the original iFrame devices, as Youtube module WORKS ONLY with FrameXX generation devices.

3. Youtube

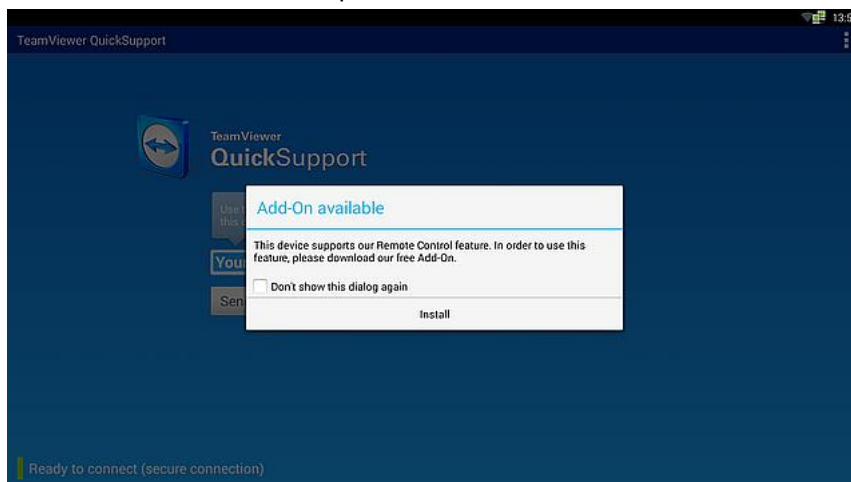
If Youtube selection in the system menu resulted in the message that it did not exist in the device, the module Youtube will be installed upon **Youtube update/installation** selection (*note: if you cannot see this option within system menu, you operate old iFrame device that does not support the Youtube module*)



If Youtube option in the main menu has been started, but immediately there appeared an error, upon first selection of **Youtube update/installation** the old module will be uninstalled. Second selection of **Youtube update/installation** will install new version.

4. TeamViewer

If **Teamviewer start** in Developer menu not working (i.e. it's not installed), the option **Teamviewer update/installation** must be used. Once installation completed, you will be requested during first TVW module start to install an important Add-On.



If **Teamviewer start** in Developer menu works, but you wish to install updated TVW version, first selection of **Teamviewer update/installation** will uninstall current version and next selection of **Teamviewer update/installation** will install a new version.

The 9-digits unique device ID will appear during start of TVW . You must provide the code to the remote support operator and once you are connected, you must still confirm you wish to have device under full remote control.

These 2 steps are crucial for prevention of unattended remote access.